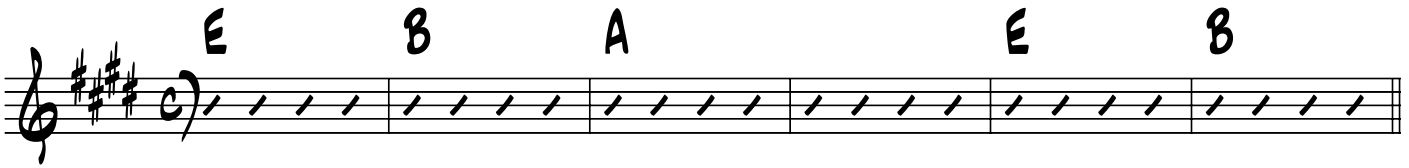


(♩ = 160)

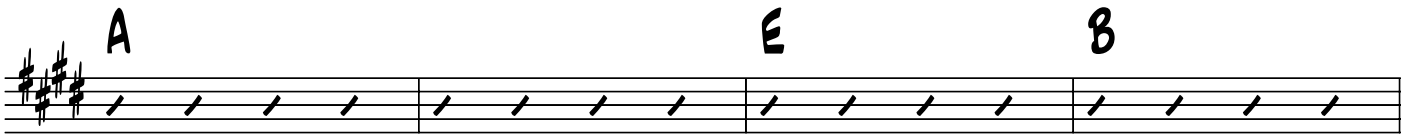
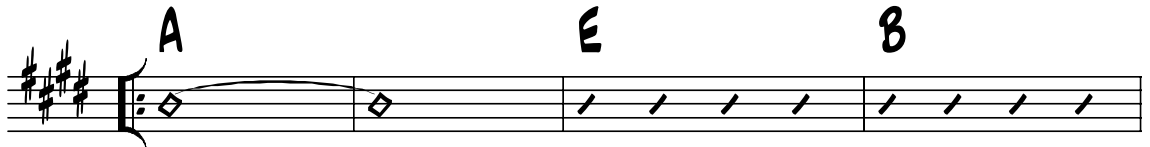
ROYALTY

WORDS AND MUSIC BY DAVID WAKERLEY AND BECI WAKERLEY



A

VERSE:



B



CHORUS:



1. E B A E B

FULL X

2.3. E B A

CHS 2: FULL X

E B A

F#m7 E/g# A

1/2 x

To

E B A

BRIDGE: D.S. AL ON LAST

PLAY 4x

E B A

CODA:

E B A